

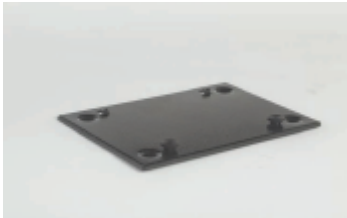


## Installation Instructions for the Hide-Away

The Quick Release Mounting Bracket (MB3912) is used to mount the Hide-Away under shelves, desks or cabinets.

Place Quick Release Mounting Bracket in desired location, mark hole pattern and drill surface to allow 1/4" wood or sheet metal screws (not Incl.) to securely fasten Mounting Bracket to surface, installing so hooks are in the back.

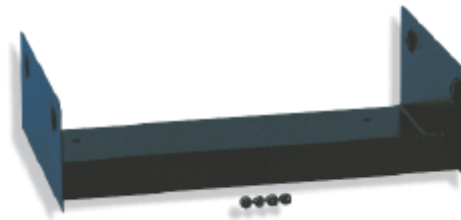
Slide Hide-Away onto hooks, open Hide-Away Case and fasten thumb screws tight into nuts in Case from the inside.



Quick Release Mounting Bracket MB3912  
(1 each included with each Hide-Away)



Hide-Away (shown with optional  
Universal Mounting Bracket)



Optional Universal Mounting Bracket UBHA

### Universal Mounting Bracket

Used to install the Hide-Away on top of a flat surface, such as the top shelf of a closet or a bookshelf.

Bolt Mounting Bracket in desired location, with formed end in front using holes in bottom of Bracket. Using Tamper-proof screws fasten Hide-Away to Bracket through holes located on sides of Case.

If you have any questions please call our customer service department for assistance.

**V-Line Ind.**  
370 Easy St.  
Simi Valley, CA 93065  
805 520-4987  
[www.vlineind.com](http://www.vlineind.com)